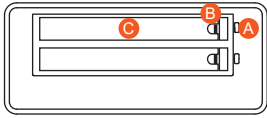


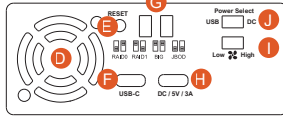
ZR2-B31BP / ZR2-BA31BP 快速安裝導引

產品示意圖與配件表

前視圖



背視圖



- A 硬碟讀取燈
- E RESET 鈕
- I 風扇轉速切換按鈕
- B 硬碟抽取盒頂針孔
- F USB 3.2 Gen2 Type-C 埠 (10Gbps)
- J Power Select 開關
- C 硬碟抽取盒把手
- G RAID 切換鈕
- D 風扇
- H USB Type-C 電源輸入埠 (電源輸入 5V / 3A)

打開包裝外盒後，包裝內容應包含下列組件：

ZR2 主體 x1(內含抽取盒 x2)	
USB 3.2 C to C 連接線 x1 (for ZR2-BA31BP / ZR2-B31BP)	
USB 3.2 C to A 連接線 x1 (for ZR2-BA31BP)	
快速安裝導引 x1	頂針

- 請先確認相關配件與產品本身是否有受損或是缺少配件，若有任何疑問，請與您的經銷商或業務人員聯絡。
- 請前往官網 (www.stardom.com.tw) 下載說明書、驅動程式以及其餘相關資源。

注意：開啟產品電源前，請確認產品與主機端（開機狀態）已連接，否則產品將進入休眠狀態。



V.0.1 (Mar. 2022)

1

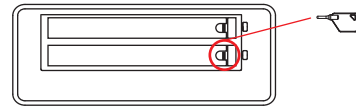
燈號說明

狀態	M.2 SATA 讀取燈		
	RAID 0, BIG,	RAID 1	JBOD
M.2 閒置	藍燈恆亮	藍燈恆亮	藍燈恆亮
無 M.2	紅燈恆亮	紅燈恆亮	紅燈恆亮
資料存取	藍燈閃爍	藍燈閃爍	藍燈閃爍
資料重建 - 來源碟	N/A	呼吸燈 (藍燈)	N/A
資料重建 - 目標碟	N/A	呼吸燈 (紫燈)	N/A

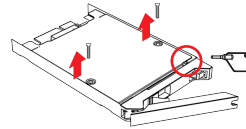
硬體安裝

請參照下列步驟，完成 ZR2 的硬體安裝：

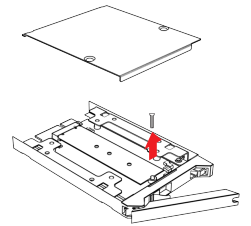
- 將系統擺放於穩固平台，並確認散熱風扇口沒有被其他物體擋住，系統四周有適當的散熱空間。(擺放環境請避免接近潮濕或其他易對產品造成損傷的環境)
- 使用配件內附的頂針插入硬碟抽取盒頂針孔後，抽取盒門將會輕彈開啟，便可取出抽取盒。



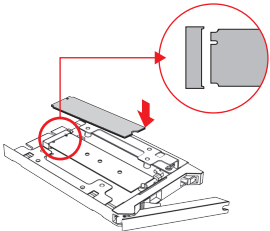
- 取出抽取盒上蓋的螺絲，再用頂針撬開上蓋並移除。



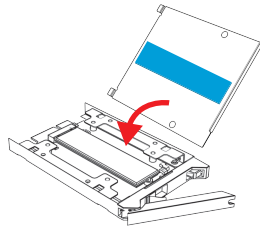
- 取出固定 M.2 位置的螺絲。



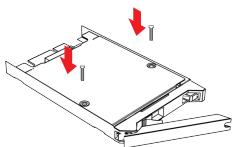
- 插入 M.2 並鎖上螺絲。



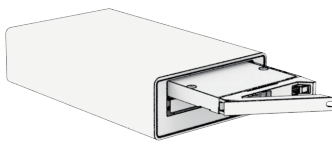
- 蓋回上蓋。



- 鎖上螺絲。



- M.2 安裝完成後，請將抽取盒平移放入主機內，並關上把手。

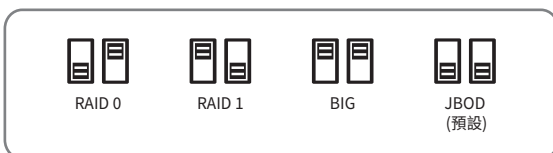


- 視電腦 USB 埠類型選擇配件中的對應的 USB 連接線，連接電腦與 ZR2 的 USB 埠。
- 電腦開機後，您的作業系統會自動辨識到 ZR2；請透過機體背面的 RAID 切換鈕，設定所要使用的 RAID 模式。
- RAID 模式設定完成後，您的作業系統會自動辨識到儲存容量；待辨識成功後，請依據您所需的儲存格式，將 ZR2 依照作業系統的指示完成格式化，待硬盤格式化完成後，便可直接使用 ZR2。

※ 若您使用的是 USB 3.2 C to A 連接線，主機端的 Type-A 需為 USB 3.2 Gen2 規格方可達到最佳存取效能。

若單獨透過 USB Type C 到 Type A 線接上主機後無法正常啟動 ZR2，請透過另外一個 Type C 埠額外供電後再接上主機。

RAID 模式切換設定



3

- RAID 0:** 一個大的獨立資料儲存容量，並可加速資料存取但無資料保護功能。
- RAID 1:** 兩顆硬碟是鏡射關係因此擁有相同的資料，因此有一顆硬碟損毀仍然可以正常運作。當放入新硬碟取代損毀硬碟後，系統會自動將資料重建到新的硬碟。
- BIG:** 兩顆硬碟的容量會被加總成一個大儲存容量，但無資料保護功能。
- JBOD:** 可對兩顆獨立硬碟進行管理的工作，能大幅增加硬碟管理上的便利性，但無資料保護功能。

切換 RAID 設定的標準程序：

- 請在 ZR2 連線到電腦後，打開電腦的電源開關。
- 在硬碟讀取燈的藍燈恆亮時，將在 ZR2 背板上設定 RAID 的「切換開關」調至 JBOD。
- 使用頂針插入「重置鍵」，待硬碟讀取燈上的藍紫燈結束閃爍，並轉成恆亮藍燈後鬆開頂針。
- 在硬碟讀取燈的藍燈恆亮時，將在 ZR2 背板上設定 RAID 的「切換開關」調到你所要的設定位置。
- 使用頂針插入「重置鍵」，待硬碟讀取燈上的藍紫燈結束閃爍，並轉成恆亮藍燈後鬆開頂針。
- 請您再做一次關、開 ZR2 電源的動作後，您已經改變、並重新設定了 ZR2 的 RAID。

產品使用注意事項

- 硬碟格式化後，由電腦主機作業系統所辨識 ZR2 的實際總容量會與硬碟廠所標示的容量加總後，將有所差異。
- 當系統運作時，請勿任意移除，以免導致資料遺失。
- 為了確保節能功能的正常運作，請將 USB 連接線常態性與電腦端保持連接。
- 完成系統初始化安裝後，在使用上請勿任意變更硬碟位置；此動作將可能導致系統無法形成 RAID。
- RAID 模式一旦設定完成，若要進行切換，因切換過程中將會清除硬碟中的資料，請務必先將硬碟中的資料另行備份後再行切換。
- 切換 RAID 模式前，均需先切換至 JBOD 後，再調整至所需要的模式。
- 新增或變更 RAID 模式後需重新啟動產品，以確保完成更新為新的 RAID 模式。
- 當您需要關閉或移除 ZR2 時，務必透過您所操作的作業系統中執行硬碟安全移除後，方進行電源關閉的動作。
- 強烈建議除了使用 ZR2 的資料儲存功能外，請針對重要資料備份到另一個儲存裝置上或遠端備份，雙重備份您重要的資料。若您儲存在 ZR2 的資料損毀或遺失，STARDOM 將不負任何的責任。

感謝您使用 銳銳科技股份有限公司 的產品。

本手冊裡的資訊在出版前雖然已經被詳細確認，但實際產品規格將已出貨時為準；任何的產品規格或相關資訊更新，請您直接上 www.STARDOM.com.tw 網站查詢，或直接與您的業務聯絡窗口聯繫，本公司將不另行通知。

如果您對 銳銳科技 的產品有任何疑問，或是想獲得最新產品訊息、使用手冊或韌體，請您聯絡 services@stardom.com.tw，我們將儘速回覆您。

STARDOM 為 銳銳科技股份有限公司 旗下品牌之一
本說明相關產品內容歸 銳銳科技股份有限公司 版權所有

4

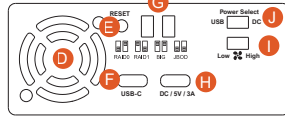
ZR2-B31BP / ZR2-BA31BP Quick Setup Guide

Product Illustration and Parts List

Front View



Rear View



- A** HDD access light
- B** HDD enclosure pin release
- C** HDD enclosure handle
- D** Fan
- E** RESET hole
- F** USB 3.2 Gen2 Type-C port (10Gbps)
- G** RAID switch
- H** USB Type-C for DC Input (DC input 5V/3A)
- I** Fan speed switch
- J** Power select switch

The following items should be inside the package upon opening:

ZR2 product x1 (containing HDD enclosure x2)	
USB 3.2 C to C cable x1 (for ZR2-BA31BP / ZR2-B31BP)	
USB 3.2 C to A cable x1 (for ZR2-BA31BP)	
Quick setup guide x1	Ejector pin

- Please check the product and accessories for any defect or missing parts. If you have any questions, please contact your product supplier.
- Please visit the official website - Download page (<http://www.stardom.com.tw/STAR-DOM2016/download.php>) to download other related resources.

NOTE:
Please make sure that the product is connected to the host (power on status) before turning on the power, otherwise the product will be on the sleep mode.



V0.1 (Mar. 2022)

1

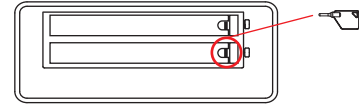
The Indication of HDD Status

Status	M.2 SATA Light		
	RAID 0, BIG	RAID 1	JBOD
M.2 idle	Blue light always on	Blue light always on	Blue light always on
No M.2 detected	Red light always on	Red light always on	Red light always on
Data access	Blue light flashing	Blue light flashing	Blue light flashing
Rebuilding data - Source HDD	N/A	Breathing Blue Light	N/A
Rebuilding data - Target HDD	N/A	Breathing Purple Light	N/A

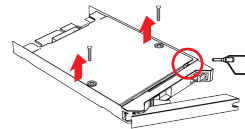
Hardware Installation

Please follow the instructions below to complete the hardware installation.

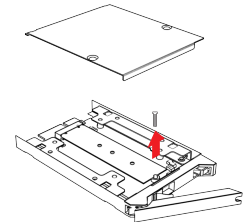
- Place the system on a stable surface. Ensure that the vent is not blocked and that it is installed in a well-ventilated area. (Please keep the product away from moisture and other environment that might be harmful to the product)
- Use the ejector pin included in the accessory kit to eject the HDD enclosure handle, and then pull tray handle to remove it.



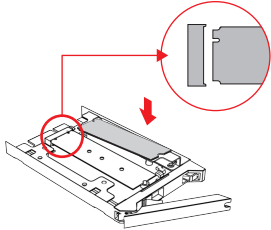
- Remove the screws of the upper cover of the tray, and then use the ejector pin to pry open the upper cover and remove it.



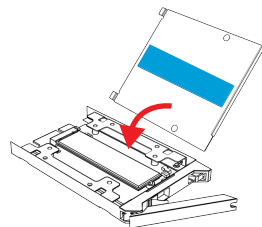
- Remove the screws holding the M.2.



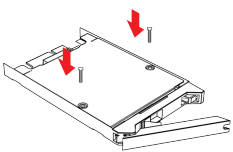
- Insert M.2 and fix the screw.



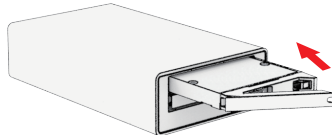
- Put the upper cover back.



- Fix the screws.



- When the M.2 installation has been completed, insert the tray into the system horizontally and secure the latch into place.

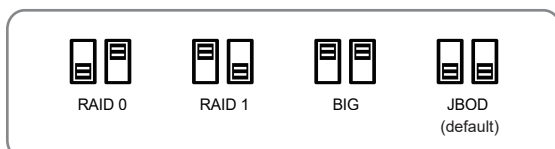


- Depending on the computer's USB port type, select the corresponding USB cable in the accessory to connect the computer to the ZR2's USB port.
- After the computer is turned on, your operating system will automatically recognize the ZR2. Please use the RAID switch to set the RAID mode you want to use.
- After the RAID mode is set, your operating system will automatically recognize the storage capacity; after the recognition is successful, please format the ZR2 according to the instructions of the operating system according to the storage format you need and then ZR2 can be used directly.

* If you are using a USB 3.2 C to A cable, the Type-A on the host side needs to be USB 3.2 Gen2 for best access performance.

If the ZR2 cannot be powered after connecting to the host through the USB Type C to Type A cable alone, please use another Type C port to provide additional power before connecting to the host.

RAID Mode Setting:



RAID 0: Provide a big storage capacity and the data transfer efficiency, but no data protection feature.

3

RAID 1: Because of this Mirroring feature, your two M.2 will keep an identical data after your writing works. In case one of the two M.2 is defect, ZR2 would still work fine with only one of them. And once inserting a good M.2 as the defect replacement, it will do the rebuilding work by itself.

JBOD: With JBOD mode, you could actually use the two M.2 as the normal two storages for your large memory capacity requirement, but no data protection feature.

BIG: You could enjoy a double memory capacity from this BIG feature, but no data protection feature.

The Standard Procedure to Switch RAID Setting:

- Please first connect ZR2 to your computer.
- When the blue light of the HDD access light is always on, please set RAID switch to JBOD.
- Please use the key to press the RESET hole, wait for the Blue-Purple LED on the HDD access light to finish blinking, and turn it into a solid blue light, then release the key.
- When the blue light of the HDD access light is always on, please set RAID switch to the position you demand.
- Please use the key to press the RESET hole, wait for the Blue-Purple LED on the HDD access light to finish blinking, and turn it into a solid blue light, then release the key.
- Please turn off your ZR2, and turn it back on again. You now have reset ZR2 with a new RAID mode successfully.

Important Notice

- After the hard disk is formatted, the actual total capacity of the ZR2 detected by the computer operating system will vary from the sum of all hard disk capacities stated by the manufacturer.
- To prevent data loss, do not remove ZR2 while the system is running.
- Please always connect the USB cable to the computer to ensure the energy saving function operating normally.
- Once the system has been initialized, do not switch hard disks around during use. Doing so may prevent the RAID from being recognized by the system.
- Once RAID mode has been set up, the switching of hard drives will lead to the removal of data from the hard disks. Please be sure to backup the data on the hard disk before making any switches.
- Before switching the RAID mode, you need to switch to JBOD before adjusting to the required mode.
- The product needs to be restarted after adding or changing the RAID mode, and the update is guaranteed to be the new RAID mode.
- If the ZR2 needs to be shut down or disconnected, please ensure the HDD is safely removed through your operating system before turning off the power.
- We strongly recommend backing up important data stored on the ZR2 to another storage device or a remote site. STARDOM will not be held liable for the damage or loss of data you stored on the ZR2.

Thank you for choosing STARDOM's product. The information provided in this manual was checked before publication, but the actual product specifications may have changed before shipping; Latest product specifications and updates can be found at www.STARDOM.com.tw or through your sales representative. No separate notifications will be provided by our company.

If you have any questions about RAIDON products or would like to receive the latest product information, instruction manuals, or firmware, please contact services@stardom.com.tw for assistance.

STARDOM is one brand under RAIDON TECHNOLOGY, INC.

All product-related content in this manual are copyrighted by RAIDON TECHNOLOGY, INC.

4